

**PREPARED BY THE
PARTNERSHIP FOR RURAL
AMERICA CAMPAIGN**

**FACTS ABOUT
MISSISSIPPI
COUNTIES AND
SCHOOLS**

- **Mississippi School Districts and Counties receive approximately \$9 million in annual funding from SRSCA**
- **33 rural counties and 38 school districts in Mississippi receive annual funding from SRSCA**
- **Reauthorization of SRSCA is a priority for rural communities**

**LEARN MORE ABOUT
SRSCA...**

**About the Partnership 2
for Rural America
Campaign**

**Total SRSCA pay- 3
ments 2008 through
2011 to Mississippi**

**Picture of SRSCA 4
Funding to Mississippi
School Districts**

**Table of SRSCA Pay- 7
ments by Contres-
sional District**

**Map of SRSCA Pay- 8
ment by Congres-
sional District**

The Reauthorization of the Secure Rural Schools & Community Self-Determination Act (*County Payments*)

Secure Rural Schools & Community Self-Determination Act (SRSCA) A “Contract” between the Federal Government and Rural Counties

The Secure Rural Schools & Community Self-Determination Act is a contract based upon a historic partnership between the federal government and forested counties.

In 1911, the Weeks Act authorized the purchase of lands in the eastern and southern US to protect the headwaters of navigable streams. These lands were to be maintained as National Forests and the Act required that, “five per centum of all monies received during any fiscal year from each National Forest...shall be paid to the States...for the benefit of the public schools and public roads of the county or counties in which such National Forests are situated...” In 1913 Agricultural Appropriations Bill language was added to the Weeks Act wherein the 5% was changed to

25% of revenue generated by activity on these lands. The Clarke McNary Act of 1924 expanded the purchase authority to the rest of the US and eliminated the requirement that the lands be acquired to protect navigable waters.

The 25% return was critical to the health of rural forested county schools and services. This is especially true as National Forests include 190 million acres nationwide and can cover as much as 87% of land mass in some counties. The 25% share worked well until

the 1980’s when harvesting was greatly reduced by environmental laws and public policy changes. This created a fiscal crisis for rural counties and schools. The “contract” was in jeopardy.

In response, Congress passed the Secure Rural Schools and Community Self Determination Act in 2000 to ensure the terms of the contract were met. In many cases it is the only thing standing between rural counties and schools and financial ruin.

In 2008, SRSCA provided approximately \$520 million in funding to 729 rural counties and school districts across the nation.

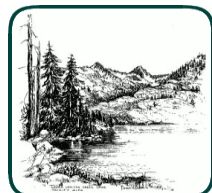


De Soto National Forest –MS

Reauthorization of SRSCA is critical for resource constrained rural Mississippi counties, schools and communities.

SRSCA Funding to Mississippi

- **In 2008, Mississippi school districts and counties received \$8.97 million in funding from SRSCA**
- **From 2008 to 2011, rural Mississippi is projected to receive \$31,466,228 in SRSCA Funding**
- **Mississippi’s SRSCA funding will decline by 76% from \$8.97 million in 2008 to \$2.17 million in 2012—a loss of \$6.8 million**



About the Partnership for Rural America Campaign

Take an Active Role Now: Join the SRSCA Reauthorization Effort in Mississippi

Mississippi Counties affected by the Act should take a leading role in the reauthorization Campaign.

Participate in the Campaign and the grass roots efforts by becoming a member of a Regional Coalition Action Team.

Sign up on our website or contact: Joel Yelverton, Marc Kelley, or Carolyn Wasem at (877) 778-7252.

Our Goal:

To renew the contract between the Federal government and rural communities through a long-term (ten-year) reauthorization of the Secure Rural Schools and Community Self-Determination Act (County Revenue Sharing Programs).

Our Purpose:

The purpose of the Partnership for Rural America is to promote the economic and social health of rural America by actively building a broad-based partnership to support the long-term reauthorization and appropriation of the Secure Rural Schools and Community Self-Determination Act.

The Partnership for Rural America Campaign provides interactive maps of state and county level SRSCS payments on our website.

Link to our website to find additional information on the history of SRSCA and additional information about funding for your county or state, or **sign up to be a volunteer to support our activities on behalf of Mississippi.**

<http://www.partnershipforruralamerica.org>

Our Partnership with the National Forest Counties and Schools Coalition


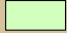

A nationwide Partnership for Rural America Campaign was initiated by the National Forest Counties and Schools Coalition in 2009. The Partnership for Rural America Campaign works together with the National Forest Counties and Schools Coalition to provide support for the reauthorization of funding for SRSCA. The mission of the National Forest Counties and Schools Coalition is to actively initiate, coordinate, and monitor activities regarding the multiple use management of public and private lands that affect their health, productivity, and sustainability; these activities impact the economic and social vitality of forest and rural county communities, families, schools, and local governments.

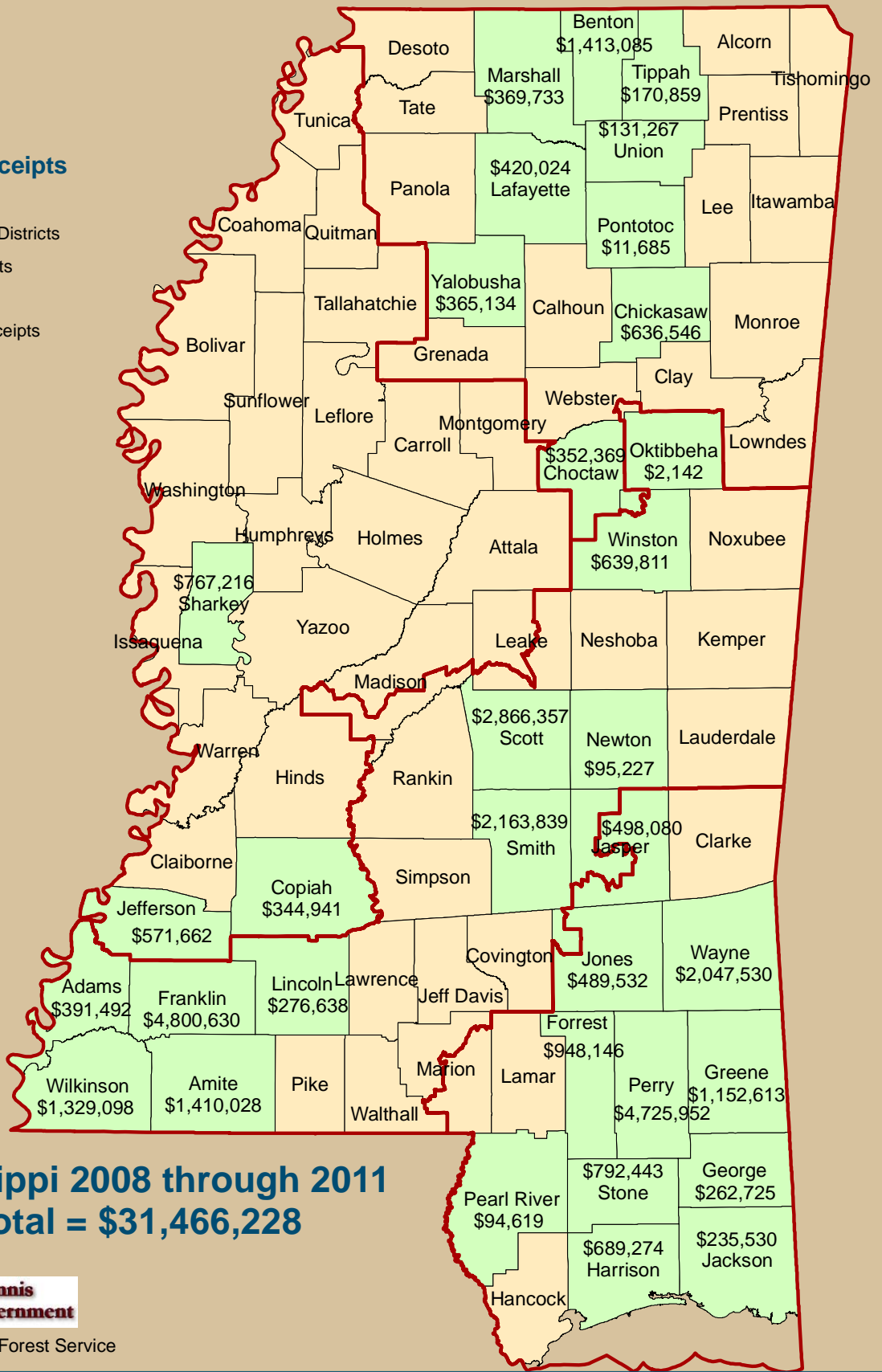
Activities of the National Forest Counties and Schools Coalition may include, but are not limited to:

- Monitoring and supporting full implementation of the counties and schools safety net legislation. Actively engaging with those activities which support and enhance the implementation of the legislation.
- Monitoring and engaging in development of policy, regulations, and legislation.
- Initiating and coordinating communications, media outreach, education, and public relations programs.
- Collaborating with other organizations in monitoring and supporting key legislation.

SRSCA Total Receipts to Mississippi Counties 2008 - 2011: \$31,466,228

SRSCA Total Receipts 2008 to 2011

-  Congressional Districts
-  SRSCA Receipts
- total 2008 - 2011**
-  No SRSCA Receipts



**Mississippi 2008 through 2011
Total = \$31,466,228**



Data Source: U.S.D.A. Forest Service

A Picture of Rural School Districts that Receive SRSCA Funding

There were 104,472 students enrolled in the 38 Mississippi School Districts that received SRSCA funding in 2008. The average poverty rate for students enrolled in school districts that receive SRSCA funding was 54.7 percent; 21 SRSCA school districts in Mississippi have a poverty rate that exceeded 60% and in 10 of the school districts the poverty rate was greater than 80% (Source: Mississippi Department of Education *Free and Reduced Lunch Statistics*). In Congressional District 2, the poverty rate for children enrolled in the Jefferson School District was 89.3% and in the South Delta School District it was 87.2% - these two school districts will receive a total of \$606,231 and \$781,988, respectively, in SRSCA funding over the period 2008 through 2011. In Congressional District 3, Franklin County received \$1,360,365 in SRSCA funding in 2008, this represented approximately 8% of the Franklin County School District's operating expenditures for the 2007-2008 school year. In Perry County (Congressional District 4), the poverty rate in the school district is 65.1% - Perry County received \$1.36 million in SRSCA funding in 2008; this represents approximately 11% of the school district's budget. **SRSCA dollars are critical to student success.**

The loss of SRSCA funding will have serious consequences for rural school districts. Children in rural Mississippi counties need these financial resources to better compete with other students.

These resources purchase books and supplies. A loss of revenues will make it difficult for schools in rural communities to attract and keep talented teachers.



The Impact of SRSCA Funding on Roads and Bridges

There are over 74,100 miles of public roads in Mississippi. Counties in Mississippi maintain approximately 63,200 miles of rural roads and 6,000 bridges. Most of these roads are rural and are critical to economic growth, the creation of jobs, public safety, and the social health of small communities. The loss of SRSCA funding will dramatically and negatively impact the ability of counties to maintain and repair local roads and bridges.

SRSCA Value Added through Resource Advisory Committees (RACs)

The Secure Rural Schools and Community Self-Determination Act authorized the use of the Resource Advisory Committee (RAC) as a mechanism for local community collaboration with federal land managers in recommending Title II resource-benefit projects on federal lands. In 2008, **\$621,307** of SRSCA funding was allocated to Resource Advisory Committee activities in Mississippi to implement forest and ecosystem health projects ranging from forest thinning to road construction projects; these projects provide jobs and contribute to local economies.

SRSCA Payments to Mississippi 2008 through 2012 by County

County	FY 2008	FY 2009	FY 2010	FY 2011 Pro-	FY 2012 estimated*	Decrease from 2008
Adams	\$115,572	\$103,297	\$87,950	\$84,674	\$34,837	-\$80,735
Amite	\$415,679	\$376,362	\$324,078	\$293,910	\$86,771	-\$328,907
Benton	\$414,723	\$388,254	\$331,382	\$278,726	\$38,990	-\$375,733
Chickasaw	\$177,910	\$169,630	\$155,903	\$133,104	\$55,670	-\$122,240
Choctaw	\$104,246	\$93,583	\$83,616	\$70,924	\$24,709	-\$79,536
Copiah	\$99,697	\$92,359	\$82,832	\$70,052	\$17,783	-\$81,914
Forrest	\$248,905	\$243,958	\$234,486	\$220,797	\$113,364	-\$135,541
Franklin	\$1,360,365	\$1,300,543	\$1,136,337	\$1,003,385	\$233,192	-\$1,127,172
George	\$75,184	\$70,252	\$62,195	\$55,094	\$37,615	-\$37,569
Greene	\$303,770	\$309,190	\$290,387	\$249,267	\$74,688	-\$229,082
Harrison	\$207,841	\$162,641	\$166,278	\$152,514	\$140,067	-\$67,774
Jackson	\$76,663	\$55,016	\$54,521	\$49,330	\$44,592	-\$32,071
Jasper	\$145,424	\$133,645	\$118,336	\$100,675	\$18,788	-\$126,635
Jefferson	\$176,572	\$159,692	\$124,678	\$110,721	\$19,483	-\$157,089
Jones	\$139,060	\$126,703	\$116,079	\$107,690	\$73,761	-\$65,299
Lafayette	\$114,776	\$107,912	\$101,437	\$95,899	\$28,200	-\$86,577
Lincoln	\$74,258	\$73,283	\$65,789	\$63,308	\$19,233	-\$55,025
Marshall	\$104,736	\$96,387	\$88,181	\$80,429	\$15,134	-\$89,602
Newton	\$26,031	\$25,064	\$23,823	\$20,309	\$3,644	-\$22,387
Oktibbeha	\$612	\$562	\$495	\$473	\$250	-\$363
Pearl River	\$27,925	\$24,822	\$22,198	\$19,675	\$9,066	-\$18,859
Perry	\$1,361,620	\$1,235,129	\$1,130,678	\$998,525	\$364,467	-\$997,153
Pontotoc	\$3,228	\$3,030	\$2,824	\$2,603	\$1,131	-\$2,098
Scott	\$787,686	\$764,457	\$715,155	\$599,059	\$93,036	-\$694,650
Sharkey	\$230,296	\$188,968	\$176,368	\$171,584	\$97,054	-\$133,242
Smith	\$590,432	\$599,017	\$530,202	\$444,188	\$79,268	-\$511,164
Stone	\$213,301	\$207,262	\$202,488	\$169,392	\$102,312	-\$110,988
Tippah	\$46,420	\$43,616	\$42,598	\$38,224	\$6,785	-\$39,635
Union	\$36,721	\$34,212	\$31,159	\$29,175	\$5,887	-\$30,834
Wayne	\$603,065	\$541,695	\$480,268	\$422,502	\$201,787	-\$401,278
Wilkinson	\$411,871	\$369,010	\$292,387	\$255,829	\$55,547	-\$356,325
Winston	\$183,108	\$164,308	\$140,299	\$152,097	\$61,056	-\$122,052
Yalobusha	\$99,941	\$98,328	\$87,843	\$79,022	\$14,632	-\$85,309
Total	\$8,977,636	\$8,362,187	\$7,503,248	\$6,623,157	\$2,172,798	-\$6,804,838

There are 1,173,863 acres of National Forest land in the state of Mississippi; the average SRSCA payment per acre was \$5.93 in FY 2010.

Source: ASR Final Payment Summary Report PNF (ASR-10-01)

Resource Advisory Committees

The SRS Act authorizes the use of RACs as a mechanism for local community collaboration with federal land managers in recommending Title II projects on federal lands or that will benefit resources on federal lands. The geographic boundaries of the RACs are determined locally by Forest Service officials in consultation with county and tribal officials and other stakeholders. The RACs are formed to ensure efficient and effective advice to Forest Supervisors and District Rangers responsible for approving and implementing the projects. Each RAC is assigned a Designated Federal Official to serve as the Forest Service point of contact.

The RAC's duties include reviewing proposed forest management projects in accordance with the SRS Act and making recommendations to the Forest Service and providing opportunities for interested parties to participate in the project development process. RAC duties have been expanded to include monitoring of project progress and making recommendations for appropriate changes to projects being monitored.

It is the Forest Service's responsibility to ensure that RACs are balanced and diverse with equal representation from industry, environmental groups, elected officials and local people as outlined in the SRS Act.

Officers and Membership in Resource Advisory Committees

Each RAC shall consist of 15 members appointed by the Secretary of Agriculture. Committee members shall be representative of the interests of the following three categories:

Category A

- Organized labor or non-timber forest product harvester groups
- Developed outdoor recreation, off highway vehicle users, or commercial recreation vehicles
- Energy and mineral development interests; or commercial or recreational fishing interests
- Commercial timber industry
- Federal Grazing or other land use permittee or represent non-industrial private forest land owners, within the area for which the RAC is organized

Category B

- Nationally recognized environmental organizations
- Regionally or locally recognized environmental organizations
- Dispersed recreational activities
- Archaeological and historical interests
- Nationally or regionally recognized wild horse and burro interest groups, wildlife or hunting organizations, or watershed associations

Category C

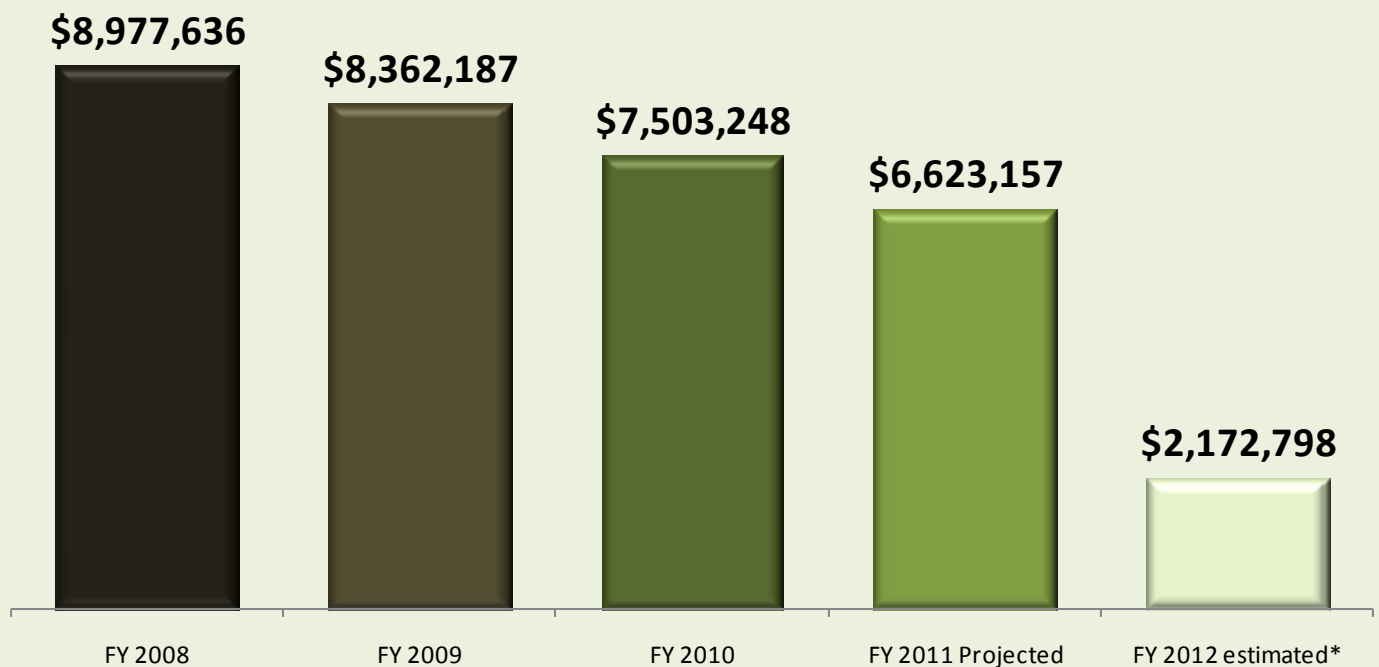
- State elected official or their designee
- County or local elected official
- American Indian tribes within or adjacent to committee area
- School official or teachers

Source: U.SDA Forest Service

SRSCA Payments to Mississippi 2008 through 2012 by Congressional District

District	FY 2008	FY 2009	FY 2010	FY 2011 Projected	FY 2012 es- timated*	Decrease from 2008 to 2012
Alan Nunnelee (District 1)	\$1,102,701	\$1,034,952	\$924,942	\$808,106	\$191,137	-\$911,564
Bennie Thompson (District 2)	\$506,565	\$441,019	\$383,877	\$352,358	\$134,320	-\$372,245
Gregg Harper (District 3)	\$3,965,613	\$3,775,902	\$3,316,516	\$2,917,232	\$666,834	-\$3,298,779
Steven Palazzo (District 4)	\$3,402,757	\$3,110,313	\$2,877,913	\$2,545,461	\$1,180,508	-\$2,222,249
Total	\$8,977,636	\$8,362,187	\$7,503,248	\$6,623,157	\$2,172,798	-\$6,804,838

State of Mississippi: Secure Rural Schools & Community Self-Determination Act Receipts 2008 - 2012



Secure Rural Schools & Community Self-Determination Act Funding to Rural Mississippi Counties and School Districts 2008—2011

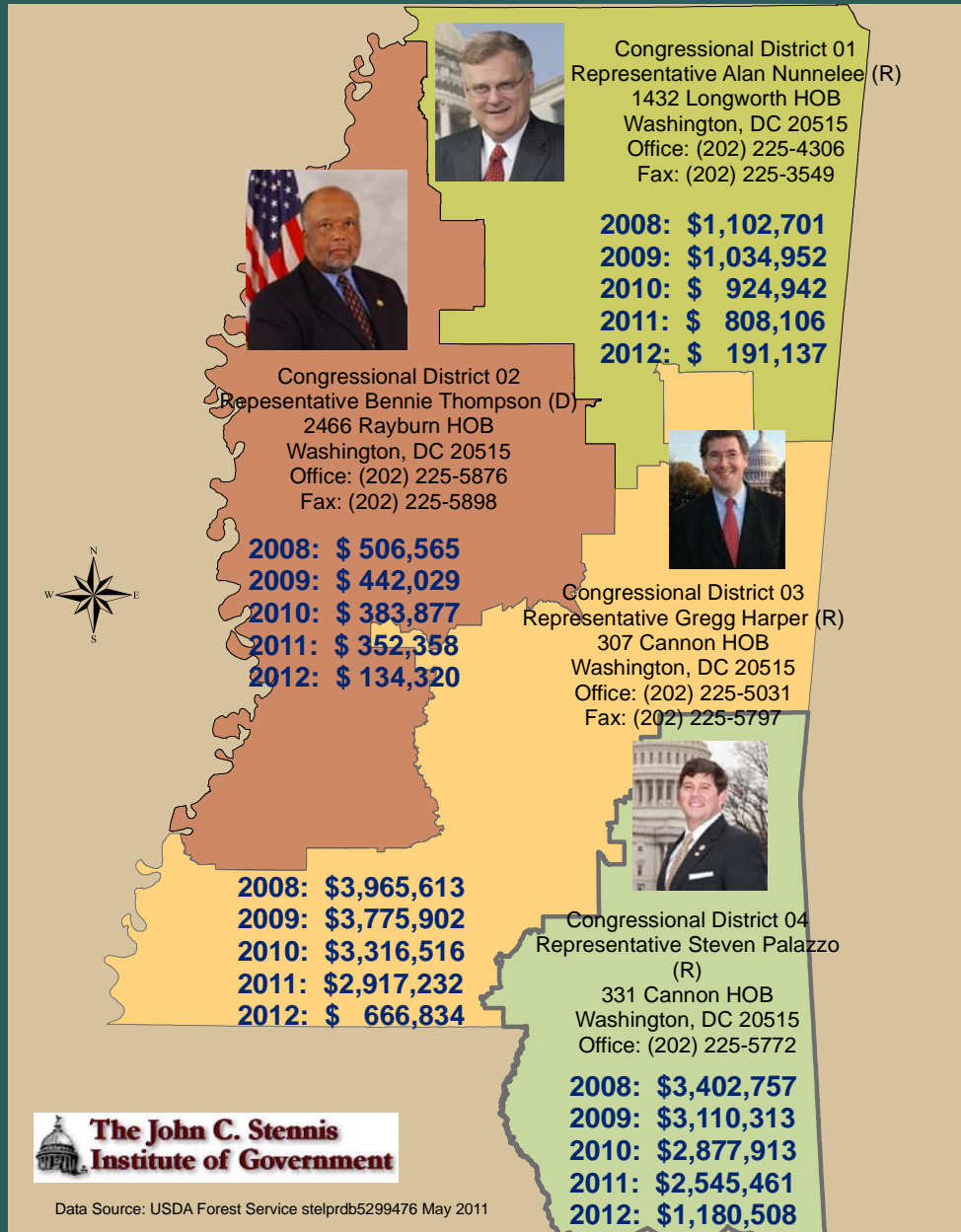
Total Funding to Mississippi: \$31,466,228



Senator Thad Cochran (R)
 113 Dirksen Senate Building
 Washington, DC 20510-2402
 Office: (202) 224-5054
 Fax: (202) 224-9450



Senator Roger Wicker (R)
 555 Dirksen Senate Building
 Washington, DC 20510
 Office: (202) 224-6253
 Fax: (202) 228-0378



TAKE AN ACTIVE ROLE NOW

- Mississippi received \$8,977,636 in 2008
- This number will fall to \$2,172,798 in 2012
- This is a loss of over \$6.8 million

Partnership for Rural America Campaign

113 Green Oak Cove ~ Clinton, MS 39056

Joel Yelverton or Marc Kelley Phone: (877) 778-7252

<http://www.partnershipforruralamerica.org>