

PREPARED BY THE  
PARTNERSHIP FOR RURAL  
AMERICA CAMPAIGN

FACTS ABOUT  
VIRGINIA  
COUNTIES AND  
SCHOOLS

- **Virginia School Districts and Counties** receive approximately **\$2.5 million in annual funding from SRSCA**
- **30 rural counties and public schools in 37 Virginia school districts** receive annual funding from **SRSCA**
- **Reauthorization of SRSCA is a priority for rural communities**

LEARN MORE ABOUT  
SRSCA...

About the Partnership  
for Rural America Campaign 2

Total SRSCA payments  
2008 through 2012 to  
Virginia Counties 3

SRSCA Payments by  
Congressional District 7

Map of SRSCA Pay-  
ments by Congressional  
District 8



# The Reauthorization of the Secure Rural Schools & Community Self-Determination Act (*County Payments*)

## Why Do We Call SRSCA a “Contract”?

The Secure Rural Schools & Community Self-Determination Act is a “contract” based upon a historic partnership between the federal government and forested counties.

In 1911, the Weeks Act authorized the purchase of lands in the eastern and southern US to protect the headwaters of navigable streams. These lands were to be maintained as National Forests and the Act required that, “five percentum of all monies received during any fiscal year from each National Forest...shall be paid to the States...for the benefit of the public schools and public roads of the county or counties in which such National Forests are situated...” In 1913 Agricultural Appropriations Bill language was added to the Weeks Act wherein

the 5% was changed to 25% of revenue generated by activity on these lands.

The Clarke McNary Act of 1924 expanded the purchase authority to the rest of the US and eliminated the requirement that the lands be acquired to protect navigable waters.

The 25% return was critical to the health of rural forested county schools and services. This is especially true as nationwide National Forests include 190 million acres and can cover as much as 87% of land mass in some counties. The 25% share worked well until the

1980’s when harvesting was greatly reduced by environmental laws and public policy changes. This created a fiscal crisis for rural counties and schools. The “contract” was in jeopardy.

In response, Congress passed the Secure Rural Schools and Community Self Determination Act in 2000 to ensure the terms of the contract were met. In many cases it is the only thing standing between rural counties and schools and financial ruin.

In 2008, SRSCA provided approximately \$520 million in funding to 729 rural counties and school districts across the nation.

**Reauthorization of SRSCA is critical for resource constrained rural Virginia counties, schools and communities.**



George Washington National Forest—  
by Sheridan Alexander

## SRSCA Funding to Virginia

- **In 2008, Virginia school districts and counties received \$2.5 million in funding from SRSCA**
- **From 2008 to 2011, rural Virginia is projected to receive \$8.64 million in SRSCA Funding**
- **SRSCA funding to Virginia will decline by 85% from \$2.5 million in 2008 to \$383,091 in 2012—a loss of \$2.11 million**

## About the Partnership for Rural America Campaign

**Take an Active Role Now: Join the SRSCA Reauthorization Effort in Virginia**

*Virginia counties affected by the Act should take a leading role in the reauthorization Campaign.*

Participate in the Campaign and the grass roots efforts by becoming a member of a Regional Coalition Action Team.

Sign up on our website or contact: Joel Yelverton, Marc Kelley, or Carolyn Wasem at (877) 778-7252.

### Our Goal:

To renew the contract between the Federal government and rural communities through a long-term (ten-year) reauthorization of the Secure Rural Schools and Community Self-Determination Act (County Revenue Sharing Programs).

### Our Purpose:

The purpose of the Partnership for Rural America is to promote the economic and social health of rural America by actively building a broad-based partnership to support the long-term reauthorization and appropriation of the Secure Rural Schools and Community Self-Determination Act.

The Partnership for Rural America Campaign provides interactive maps of state and county level SRSCS payments on our website.

Link to our website to find additional information on the history of SRSCA and additional information about funding for your county or state, or **sign up to be a volunteer to support our activities on behalf of Virginia.**

<http://www.partnershipforruralamerica.org>

### SRSCA Funds are Critical to Schools in Rural Virginia

Statewide, there are approximately 160,725 school-aged children living in Virginia counties that receive SRSCA funding. In Bath County (Congressional District 6), the poverty rate among school children is 37.8% (Source: Virginia Board of Education, Free and Reduced Lunch Statistics). In 2008, Bath County received \$200,634 in SRSCA funding; if SRSCA is not reauthorized, this amount will decrease to \$45,349 in 2012. In Smyth County (Congressional District 9), the poverty rate among school children is 56.7%. In 2008, Smyth County received \$154,437 in SRSCA receipts; if SRSCA is not reauthorized, this amount will decrease to \$14,096 in 2012.

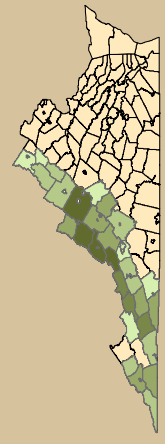
The average poverty rate among school children in Virginia counties receiving SRSCA funding is 44.1%.

**SRSCA dollars are critical to Virginia schools. The loss of SRSCA funding will have serious consequences for rural school districts.**

# SRSCA Payments to Virginia 2008 through 2011 by County

## Virginia: SRSCA 2008 - 2011 Total Receipts by County

### \$8,637,774



- Legend**
- Congressional Districts
  - Counties with SRSCA Receipts
  - Counties with no SRSCA Receipts

**The John C. Stennis**  
Institute of Government

MISSISSIPPI STATE UNIVERSITY

Data Source: U.S. Forest Service stelprdb5299476 May 2011

## Reauthorization of SRSCA

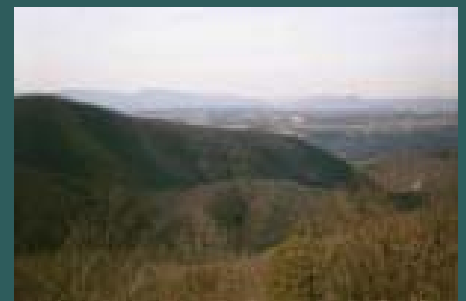
In Virginia, rural counties must fund education on a tax base that is constrained by high child poverty rates, a limited business tax base, and a property tax base that is restricted by the tax-exempt status of national forest land within their boundaries. Secure, reliable payments from SRSCA are an essential source of revenues that enable rural counties to meet their financial obligations.

**The Secure Rural Schools and Community Self-Determination Act will expire in 2011.** The reauthorization of SRSCA will ensure that students receive essential educational services and that rural communities have funding for roads, conservation projects, Search and Rescue missions, (a safety structure for residents and visitors) and fire prevention programs. Funding from SRSCA also provides necessary revenue to cash-strapped rural school districts. It is important for Congress to commit the resources necessary to ensure that rural communities do not have to make further cuts to children's education or further reduce vital services.

In 2009, counties and school districts began seeking support for the reauthorization of SRSCA to secure this important source of revenue for all rural counties and school districts.

There are approximately 1,664,467 acres of National Forest land in the state of Virginia; the average SRSCA payment per acre was \$1.15 in FY 2010.

*Source: ASR Final Payment Summary Report PNF (ASR-10-01)*



Jefferson National Forest

## SRSCA Payments to Virginia 2008 through 2012 by County

County	FY 2008	FY 2009	FY 2010	FY 2011 Pro- jected	FY 2012 es- timated*	Decrease from 2008 to 2012	Total 2008 - 2011
Allegheny	\$260,476	\$234,008	\$204,168	\$183,182	\$37,038	-\$223,438	\$881,834
Amherst	\$109,625	\$98,128	\$87,378	\$81,665	\$15,110	-\$94,515	\$376,796
Augusta	\$285,133	\$257,013	\$236,210	\$217,717	\$51,184	-\$233,949	\$996,072
Bath	\$200,634	\$182,166	\$157,676	\$142,939	\$45,349	-\$155,285	\$683,415
Bedford	\$21,125	\$18,380	\$16,146	\$15,961	\$3,539	-\$17,585	\$71,611
Bland	\$170,231	\$154,282	\$127,208	\$110,783	\$14,410	-\$155,821	\$562,504
Botetourt	\$83,906	\$70,335	\$60,419	\$55,578	\$16,214	-\$67,692	\$270,238
Carroll	\$15,519	\$13,987	\$11,713	\$10,221	\$1,370	-\$14,149	\$51,440
Craig	\$200,773	\$188,535	\$169,669	\$152,911	\$21,896	-\$178,877	\$711,887
Dickenson	\$23,056	\$21,050	\$17,073	\$14,461	\$1,626	-\$21,430	\$75,640
Frederick	\$5,843	\$5,262	\$4,944	\$4,510	\$1,275	-\$4,568	\$20,559
Giles	\$129,947	\$121,004	\$109,834	\$95,636	\$11,988	-\$117,959	\$456,421
Grayson	\$86,498	\$81,033	\$78,599	\$72,529	\$6,240	-\$80,257	\$318,659
Highland	\$93,504	\$87,986	\$77,813	\$70,725	\$15,211	-\$78,293	\$330,028
Lee	\$26,308	\$24,185	\$23,385	\$20,120	\$2,132	-\$24,176	\$93,998
Montgomery	\$43,066	\$37,579	\$34,747	\$31,456	\$3,659	-\$39,407	\$146,848
Nelson	\$5,760	\$5,566	\$5,176	\$5,176	\$5,176	-\$584	\$21,678
Page	\$60,635	\$54,515	\$47,848	\$43,216	\$7,070	-\$53,565	\$206,214
Pulaski	\$28,765	\$28,558	\$25,038	\$23,184	\$3,627	-\$25,137	\$105,545
Roanoke	\$3,082	\$2,861	\$2,466	\$2,486	\$592	-\$2,490	\$10,895
Rockbridge	\$106,074	\$96,184	\$84,459	\$76,351	\$15,910	-\$90,163	\$363,068
Rockingham	\$40,614	\$39,244	\$36,493	\$36,493	\$36,493	-\$4,121	\$152,844
Scott	\$79,202	\$71,248	\$64,325	\$57,410	\$6,503	-\$72,699	\$272,185
Shenandoah	\$22,089	\$21,352	\$19,856	\$19,856	\$19,856	-\$2,233	\$83,153
Smyth	\$154,437	\$146,741	\$127,151	\$116,037	\$14,096	-\$140,341	\$544,365
Tazewell	\$17,050	\$14,839	\$13,456	\$11,862	\$1,846	-\$15,203	\$57,206
Warren	\$1,827	\$1,766	\$1,642	\$1,642	\$1,642	-\$185	\$6,877
Washington	\$34,736	\$31,445	\$27,793	\$25,462	\$4,194	-\$30,542	\$119,436
Wise	\$72,244	\$66,806	\$62,265	\$46,878	\$6,861	-\$65,383	\$248,193
Wythe	\$113,097	\$106,323	\$92,914	\$85,828	\$10,980	-\$102,117	\$398,162
<b>TOTAL</b>	<b>\$2,495,254</b>	<b>\$2,282,379</b>	<b>\$2,027,864</b>	<b>\$1,832,277</b>	<b>\$383,091</b>	<b>-\$2,112,163</b>	<b>\$8,637,774</b>

\* Source: USDA Forest Service, Estimated county share of 25% payments for FY 2010. When the SRSCA expires at the end of fiscal year 2011, payments to states will be a 25-percent share of a rolling 7-year average annual receipts.

# Resource Advisory Committees

The SRS Act authorizes the use of RACs as a mechanism for local community collaboration with federal land managers in recommending Title II projects on federal lands or that will benefit resources on federal lands. The geographic boundaries of the RACs are determined locally by Forest Service officials in consultation with county and tribal officials and other stakeholders. The RACs are formed to ensure efficient and effective advice to Forest Supervisors and District Rangers responsible for approving and implementing the projects. Each RAC is assigned a Designated Federal Official to serve as the Forest Service point of contact.

The RAC's duties include reviewing proposed forest management projects in accordance with the SRS Act and making recommendations to the Forest Service and providing opportunities for interested parties to participate in the project development process. RAC duties have been expanded to include monitoring of project progress and making recommendations for appropriate changes to projects being monitored.

It is the Forest Service's responsibility to ensure that RACs are balanced and diverse with equal representation from industry, environmental groups, elected officials and local people as outlined in the SRS Act.

## Officers and Membership in Resource Advisory Committees

Each RAC shall consist of 15 members appointed by the Secretary of Agriculture. Committee members shall be representative of the interests of the following three categories:

### Category A

- Organized labor or non-timber forest product harvester groups
- Developed outdoor recreation, off highway vehicle users, or commercial recreation vehicles
- Energy and mineral development interests; or commercial or recreational fishing interests
- Commercial timber industry
- Federal Grazing or other land use permittees or represent non-industrial private forest land owners, within the area for which the RAC is organized

### Category B

- Nationally recognized environmental organizations
- Regionally or locally recognized environmental organizations
- Dispersed recreational activities
- Archaeological and historical interests
- Nationally or regionally recognized wild horse and burro interest groups, wildlife or hunting organizations, or watershed associations

### Category C

- State elected official or their designee
- County or local elected official
- American Indian tribes within or adjacent to committee area
- School official or teachers

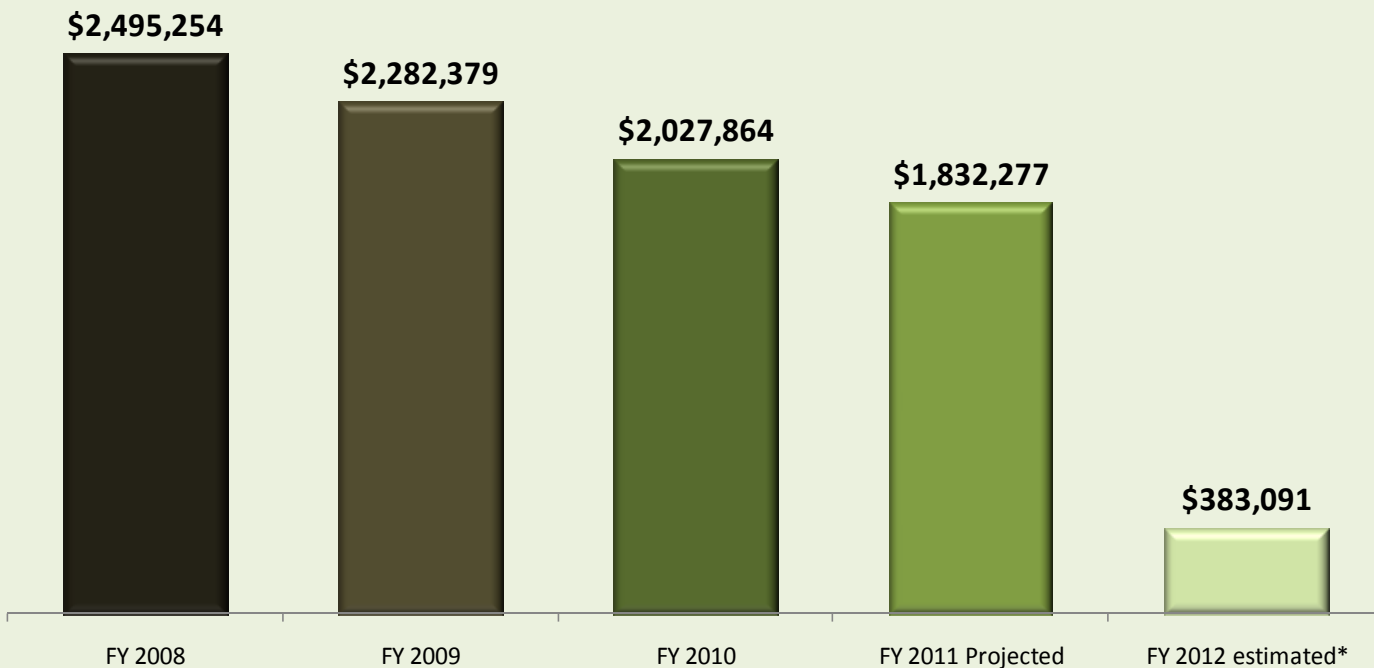
*Source: U.SDA Forest Service*

## SRSCA Payments to Virginia 2008 through 2012 by Congressional District

Congressional District	FY 2008	FY 2009	FY 2010	FY 2011 Pro- jected	FY 2012 esti- mated*	Decrease from 2008 to 2012	Total 2008 - 2011
Robert Hurt (District 5)	\$26,885	\$23,946	\$21,321	\$21,137	\$8,715	-\$18,169	\$93,289
Robert Goodlatte (District 6)	\$1,205,135	\$1,089,278	\$966,938	\$886,993	\$252,958	-\$952,178	\$4,148,345
Eric Cantor (District 7)	\$60,635	\$54,515	\$47,848	\$43,216	\$7,070	-\$53,565	\$206,214
Morgan Griffith (District 9)	\$1,194,928	\$1,107,613	\$985,170	\$874,779	\$111,430	-\$1,083,498	\$4,162,490
Frank Wolf (District 10)	\$7,670	\$7,028	\$6,586	\$6,152	\$2,917	-\$4,753	\$27,436
<b>TOTAL</b>	<b>\$2,495,254</b>	<b>\$2,282,379</b>	<b>\$2,027,864</b>	<b>\$1,832,277</b>	<b>\$383,091</b>	<b>-\$2,112,163</b>	<b>\$8,637,774</b>

\* Source: USDA Forest Service, Estimated county share of 25% payments for FY 2010. When the SRSCA expires at the end of fiscal year 2011, payments to states will be a 25-percent share of a rolling 7-year average annual receipts.

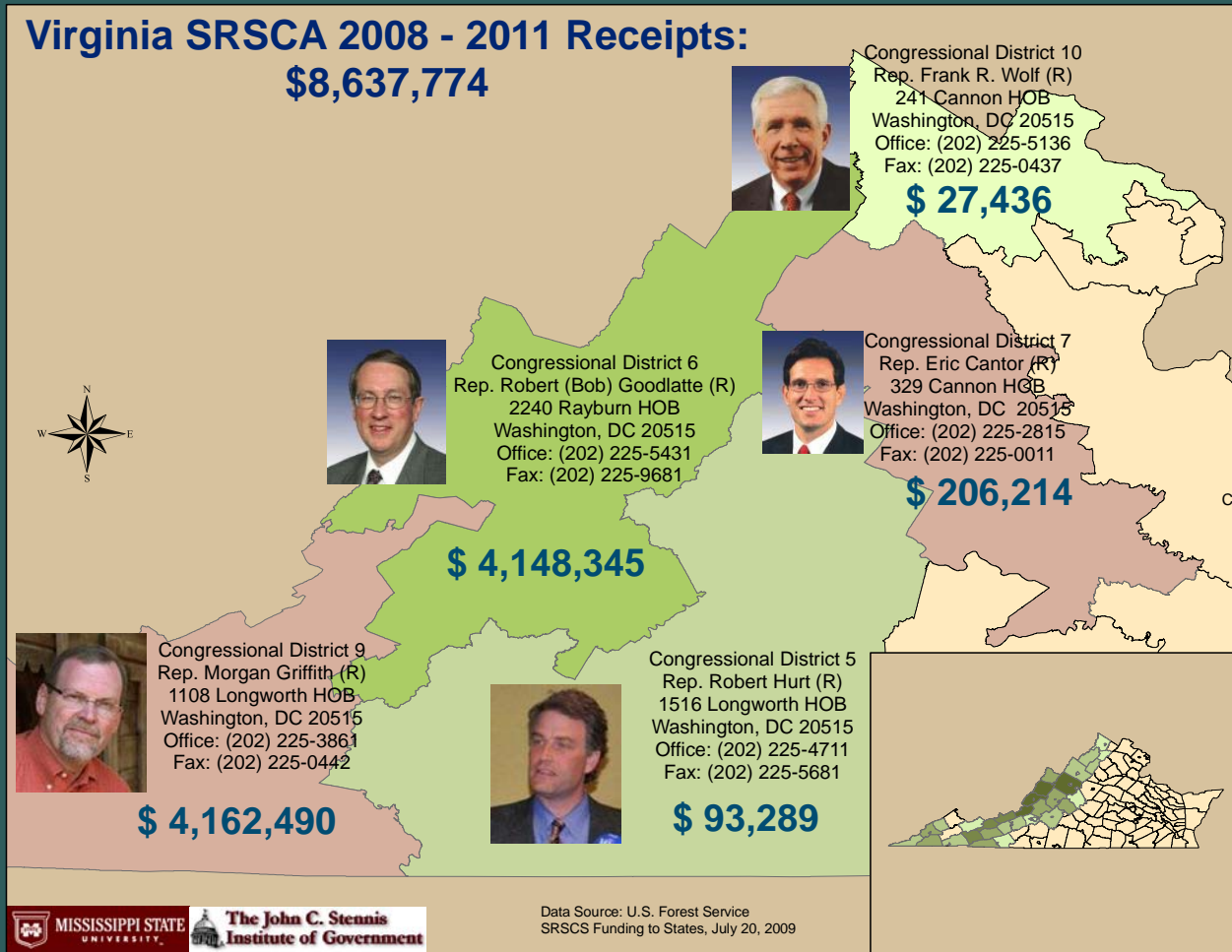
### State of Virginia: Secure Rural Schools & Community Self-Determination Act Receipts 2008 - 2012



# Secure Rural Schools & Community Self-Determination Act

## Funding to Rural Virginia Counties and School Districts 2008—2011

### Virginia SRSCA 2008 - 2011 Receipts: \$8,637,774



Data Source: U.S. Forest Service  
SRSCS Funding to States, July 20, 2009

- Virginia received \$2,495,254 in 2008
- This amount will fall to \$383,091 in 2012
- This is a loss of \$2.11 million



**Senator Mark R. Warner (D)**  
459A Russell Senate Office Bldg.  
Washington, DC 20510  
Office: (202) 224-2023  
Fax: (202) 224-6295



**Senator Jim Webb (D)**  
248 Russell Senate Office Bldg  
Washington, DC 20510  
Office: (202) 224-4024  
Fax: (202) 228-6363

### TAKE AN ACTIVE ROLE NOW

#### Partnership for Rural America Campaign

113 Green Oak Cove ~ Clinton, MS 39056

Joel Yelverton or Marc Kelley Phone: (877) 778-7252

<http://www.partnershipforruralamerica.org>

